

The Leopoldina's Scientific Journals

Tradition with a future

The Leopoldina publishes the series Nova Acta Leopoldina (NAL) and Acta Historica Leopoldina (AHL). The Nova Acta Leopoldina continues the tradition of the first medical-scientific journal of a scientific academy founded by the Breslau (Wrocław) physician Philipp Jakob Sachs of Lewenhaimb in 1670. Its extensive essays, complemented by elaborate diagrams, prints and tables, continued to set it apart from similar journals in later years. Today it covers all the specialist fields represented by the Leopoldina.

The Acta Historica Leopoldina publishes articles on the history of science, the theory of science and the study of science in the humanities and cultural studies. NAL and AHL are subject to a transparent peer review process.

With NAL-live, the Leopoldina continues the tradition of its scientific journals and is part of the Open Access initiatives of German science.

Editorial Office

Deutsche Akademie der Naturforscher Leopoldina e.V.
– National Academy of Sciences –
Editorial Office
Emil-Abderhalden-Str. 37
D-06108 Halle (Saale)
E-Mail: redaktion@leopoldina.org

Manuscripts

Would you like to suggest a topic or submit a manuscript?
Register online:

www.nal-live.org

The Leopoldina originated in 1652 as a classical scholarly society and now has 1,600 members from almost all branches of science. In 2008, the Leopoldina was appointed as the German National Academy of Sciences and, in this capacity, was invested with two major objectives: representing the German scientific community internationally, and providing policymakers and the public with science-based advice.

The Leopoldina champions the freedom and appreciation of science on both the national and the international level. It is her role to identify and analyse scientific issues of social importance. The Leopoldina presents its policy recommendations in a scientifically qualified, independent, transparent and prospective manner, ever mindful of the standards and consequences of science.



Leopoldina
Nationale Akademie
der Wissenschaften

NAL-live

The new scientific journal of the Leopoldina

Contact

Dr. Renko Geffarth, Editorial Manager
German National Academy of Sciences Leopoldina
Fon: +49 (0)345 472 39 - 146
E-Mail: redaktion@leopoldina.org
www.nal-live.org

An interdisciplinary online journal in Open Access
for lively scientific discussion

www.nal-live.org

NAL-live

Online Open Access Journal

The National Academy of Sciences Leopoldina continues the scientific journals of the Academy, the Nova Acta Leopoldina (NAL) and the Acta Historica Leopoldina (AHL), with new concepts. This includes a new scientific journal: NAL-live, an online open access journal for review style articles. The publication language is English.

Living Documents

NAL-live aims to stimulate, moderate and document open scientific discussions. Once published, articles are continuously updated by the scientific community as "Living Documents". After the first publication (version 1.0), the authors, but also other scientists, can further develop them in a peer-reviewed process. Thus, new scientific developments are integrated into the articles; new literature, new methods and new interpretations are taken into account. This generates articles that have been commented on and supplemented (version 1.1 etc.) and revised or updated (version 2.0 etc.).

Authors submit scientific articles with a focus on topics that – according to the National Academy's task – are of high social relevance across disciplines. In this way, the texts should also provide an information basis on the respective topic for those working in politics and the media.

Gold Open Access

All NAL-live articles are available online in Gold Open Access. The articles are published under the Creative Commons license CC BY 4.0.

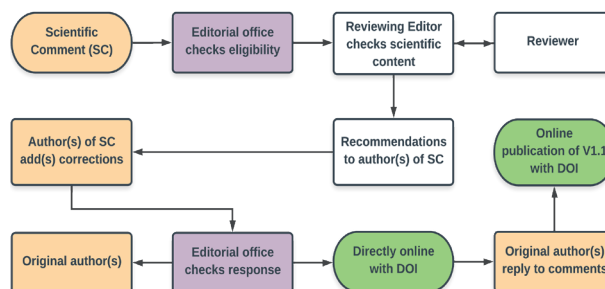


Registration and Indexing

All versions, comments and additions have their own Digital Object Identifier (DOI), are completely and comprehensively documented and thus remain permanently citable. The participating authors can include them in their own publication lists; index services can register them.



A detailed description of the Manuscript Flow and the versioning of the articles as well as the guidelines for authors can be found online at www.nal-live.org.



Editorial Board

Chief Editor ("Director Ephemeridum") of all journals of the Leopoldina is Prof. Dr. Diethard Tautz ML*. Together with Co-Editors from all four of the Leopoldina's classes he forms the Editorial Board for NAL-live. Co-Editors are Prof. Dr. Gerd Leuchs ML (Class I: Mathematics, Natural Sciences and Engineering), Prof. Dr. Alfred Wittinghofer ML (Class II: Life Sciences), Prof. Dr. Ulf Eysel ML (Class III: Medicine) and Prof. Dr. Christine Windbichler ML (Class IV: Humanities, Social and Behavioural Sciences).

Section Editors represent the sections of the Leopoldina, Review Editors take over the review of the manuscripts.

Suggested Topics and Articles

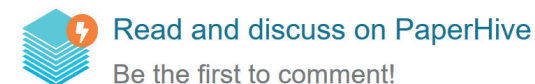
The members of the Editorial Board, the Section Editors and the Editorial Office of the Leopoldina accept suggestions for topics and manuscripts for publication in NAL-live.

In 2019, the Leopoldina has established the technical infrastructure for the online submission of manuscripts, the reviewing process and the editorial work. Manuscripts for NAL-live that comply with the guidelines for authors can be submitted directly online. Authors can register at www.nal-live.org and upload their manuscripts in just a few steps. Once registered, they can follow the progress of their work via a dashboard.

Publication and Discussion

The Editorial Office of the Leopoldina first checks each submission for compliance with the formal requirements before the relevant Section Editors initiate the peer review process. Once the peer review process has been successfully completed, the article receives a DOI and is published online.

The articles, as well as the comments and the versions, will initially be published in a preliminary online environment, accessible at www.nal-live.org. From the outset, they will receive their own DOIs and will be immediately available to qualified participants on the PaperHive.org platform for scientific discussion. Anyone with a scientific interest can register for discussion via ORCID® and add comments or additions directly to the article. Updated and newly edited versions are also published here.



*ML – Member of the Leopoldina